

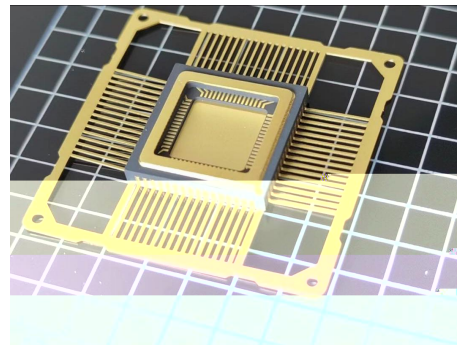
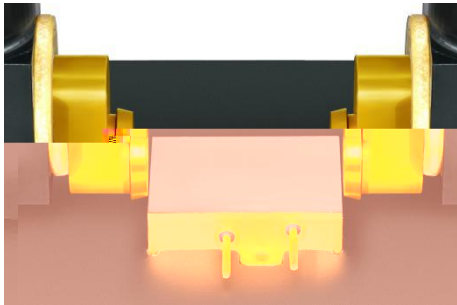
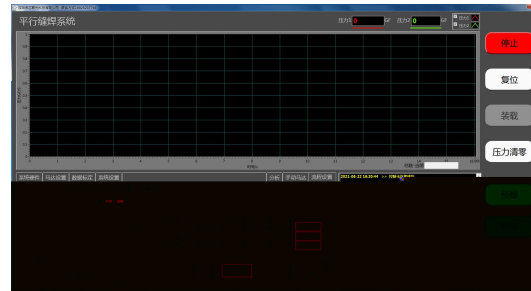
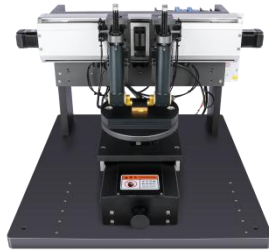
PSS10

PSS10 Windows

PSS10

PSS10

PSS10



	mm	20mm~160mm		
	gf	1000~6000		
	mm/S	0~20		
	rad/S	0~60		
	--	23	2	50~60%RH
	vac	AC220/50~60HZ		
	A	0~1000A		
L*W*H	mm	560*600*500		